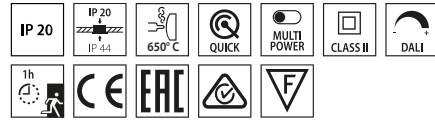


MANGO+ MAXI

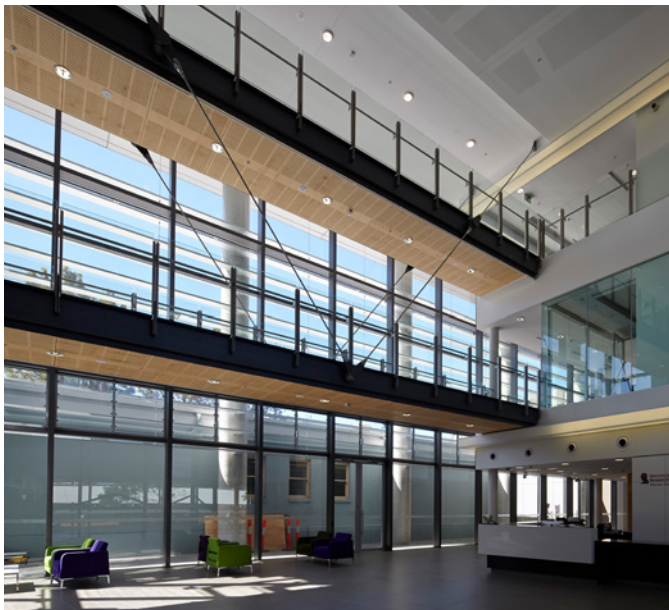


Scan the QR-code for the latest information

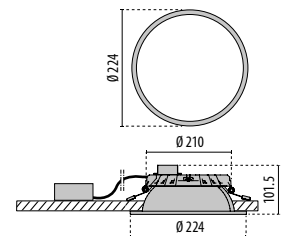
WH-RAL9010 / White RAL9010 / Textured

Recessed, modular, round LED downlight for indoor, comprising:

- Die-cast aluminium heat sink with Fast™ (Flexible air stream technology) cooling system grants an excellent dissipation and thermal management
- Injection-moulded ABS reflector with integral ceiling trim with light-tight connection to LED module
- Integrated diffuser grants an optimised uniformity
- Integral Dip-Switches to select one of two power levels, which can be field adjustable (MULTIPOWER models)
- Quick and toolless installation
- Rapid spring-type installation
- All components can be tool-less replaced lately
- Suitable for ceiling tile thickness from 1-25 mm



Neuroscience research - New South Wales - Australia



MANGO+ MAXI

MANGO+ MAXI

IP20 - IK07 - 650 °C

LUMINAIRE WATTAGE [W]	CLASS	ENEC	DIN EN 12464-1	CRI	KELVIN	LIGHTSOURCE LUMEN OUTPUT [lm]	LUMINAIRE LUMEN OUTPUT [lm]	COLOUR / FINISH	PART NUMBER	UKCA
Power LED - dimmable DALI 220-240 V 50/60 Hz										
24	II	-	-	80	4000	3450	2605	<input type="checkbox"/>	3116578	✓
24	II	-	-	80	3000	3354	2555	<input type="checkbox"/>	3116577	✓



MANGO+ MAXI MULTIPOWER

IP20 - IK07 - 650 °C

LUMINAIRE WATTAGE [W]	CLASS	ENEC	DIN EN 12464-1	CRI	KELVIN	LIGHTSOURCE LUMEN OUTPUT [lm]	LUMINAIRE LUMEN OUTPUT [lm]	COLOUR / FINISH	PART NUMBER	UKCA
Power LED 220-240 V 50/60 Hz										
18.5	II	-	-	80	4000	3450	2605	<input type="checkbox"/>	3109851	✓
24						2660	2010			
18.5	II	-	-	80	3000	3355	2555	<input type="checkbox"/>	3109850	✓
24						2580	1965			
Power LED - emergency 1h - 220-240 V 50/60 Hz										
18.5	II	-	-	80	4000	3450	2605	<input type="checkbox"/>	3109853	✓
24						2660	2010			
18.5	II	-	-	80	3000	3355	2555	<input type="checkbox"/>	3109852	✓
24						2580	1965			



MANGO+ MAXI WIELAND MULTIPOWER

IP20 - IK07 - 650 °C

LUMINAIRE WATTAGE [W]	CLASS	ENEC	DIN EN 12464-1	CRI	KELVIN	LIGHTSOURCE LUMEN OUTPUT [lm]	LUMINAIRE LUMEN OUTPUT [lm]	COLOUR / FINISH	PART NUMBER	UKCA
Power LED 220-240 V 50/60 Hz										
18.5	II	-	-	80	4000	2660	2010	<input type="checkbox"/>	3109855	✓
24						3450	2605			
18.5	II	-	-	80	3000	2580	1965	<input type="checkbox"/>	3109854	✓
24						3355	2555			

